



JDGA

GPS antennas for demanding requirements

**JDGA QVSMA-30 Quad V SMT Active GPS Antenna
30dB**



Center Frequency	1575.MHz
Beam Width	>150 degrees
Impedance	50 ohm
Polarization	Linear
Voltage	3.1Vdc-5.5Vdc
Current	25mA (@3Vdc)
Gain	30dB (@3Vdc)
Noise	0.8dB (@3Vdc)
VSWR	< 2:1
Relative Humidity	95% non condensing
Storage Temperature	-50°C to +90°
Operating Temperature	-40°C to +85°C
Dimensions with radome	13(D) X 15(W) X 49(L) mm



Rev1 May 19, 2011

JDGA 1411 E Campbell Rd Richardson TX 75081 972-699-9976 972-699-9977 (fax)

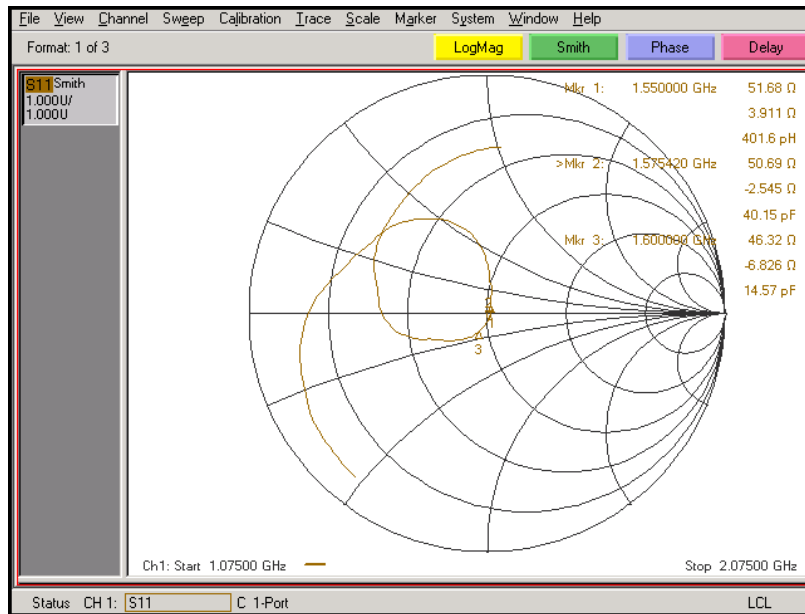
www.idgagps.com



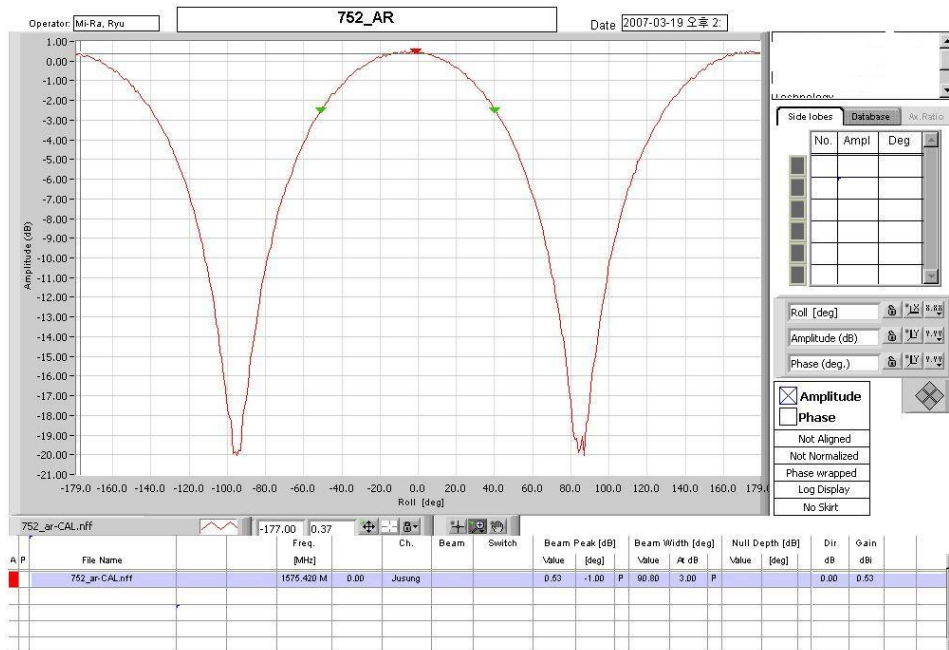
JDGA

GPS antennas for demanding requirements

Smith



Axis



Rev 1 May 19, 2011

JDGA 1411 E Campbell Rd Richardson TX 75081 972-699-9976 972-699-9977 (fax)

www.idgagps.com



JDGA

GPS antennas for demanding requirements

Element Return Loss



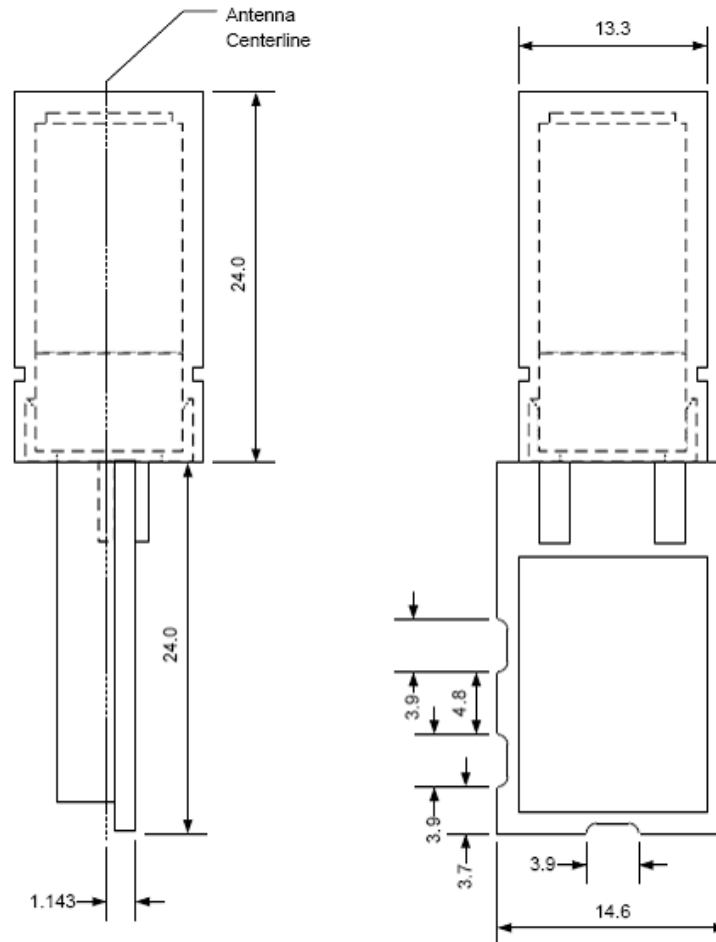
Rev 1 May 19, 2011



JDGA

GPS antennas for demanding requirements

Mechanical.



Notes:

1. All Dimensions in "mm"

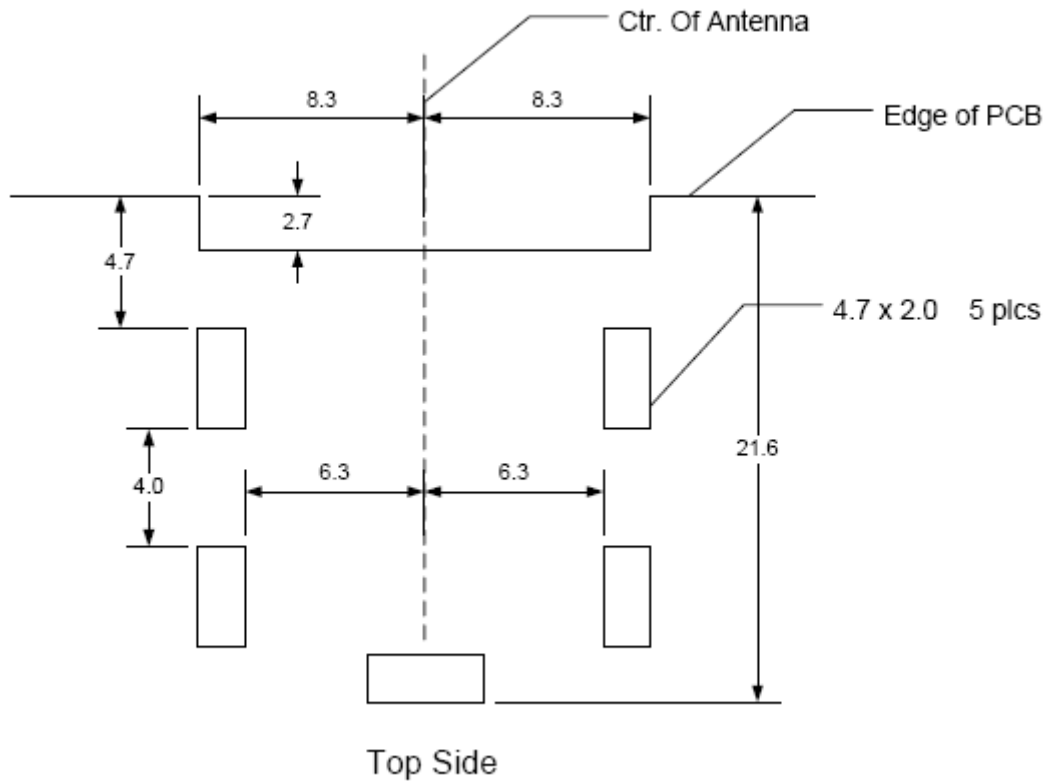
Rev 1 May 19, 2011



JDGA

GPS antennas for demanding requirements

Pad Layout



Notes:

1. All Dimensions in "mm"

Rev 1 May 19, 2011